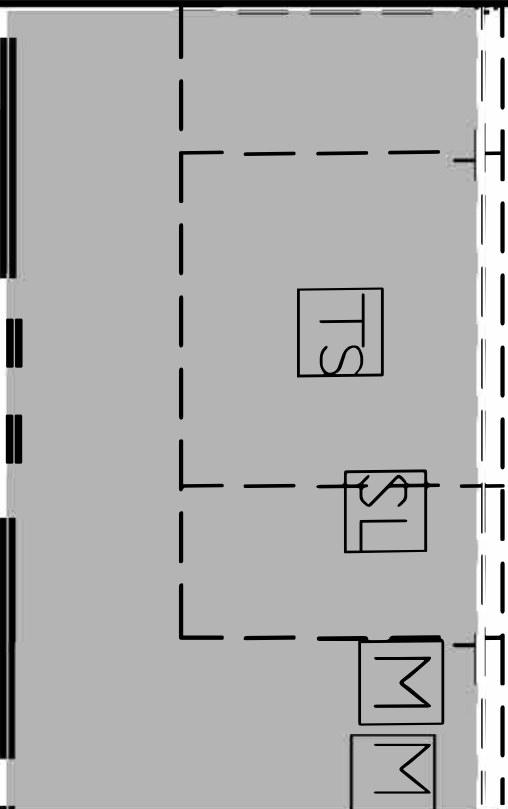


7/10 TO 7/14
COMPLETED

7/17 TO 7/28

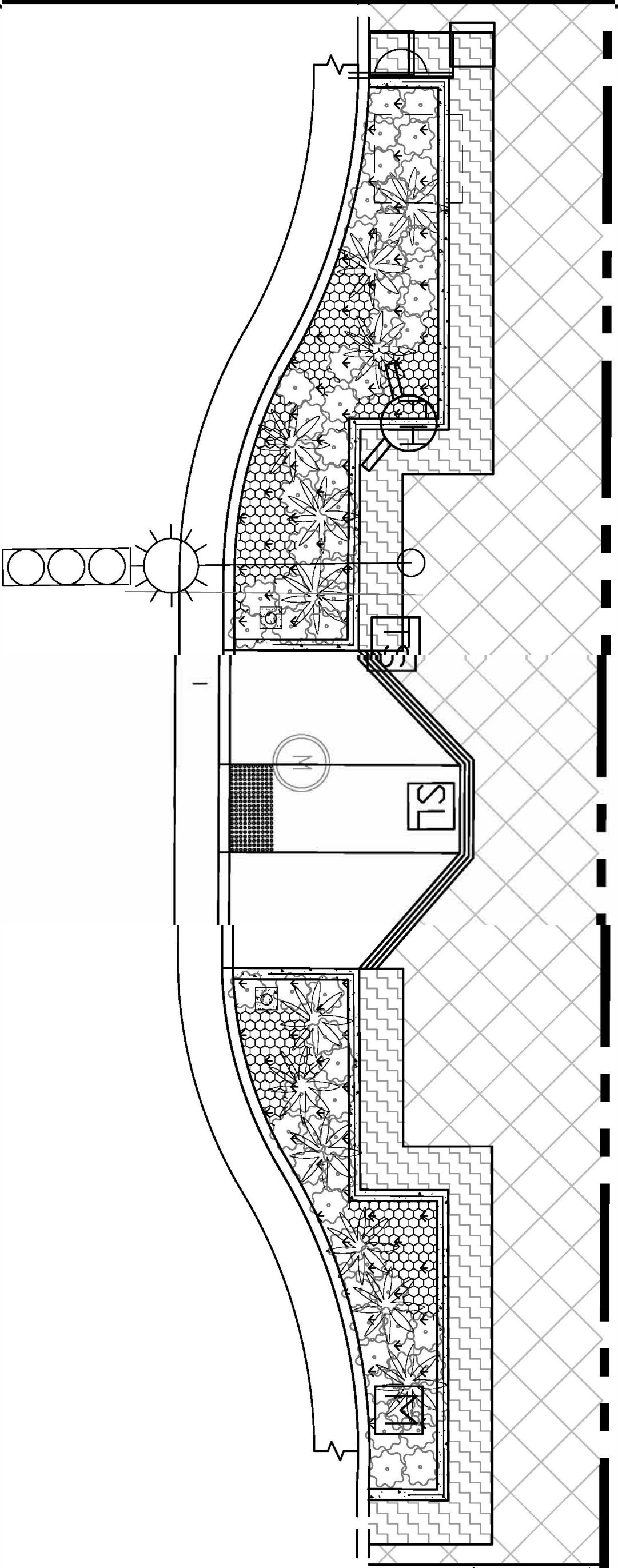
S. LOS
ANGELES
ST.



CONSTRUCTION
COMPLETED:
826A S. LOS
ANGELES ST.

- SCOPE OF WORK:
- 1) UPGRADED CURB RAMP TO ADA STANDARD
 - 2) REPLACED CURB AND GUTTER
- UTILITIES WORK :
- 1) RELOCATED ONE BSL PULL BOX
 - 2) RELOCATED ONE DOT PULL BOX

S. LOS ANGELES ST.

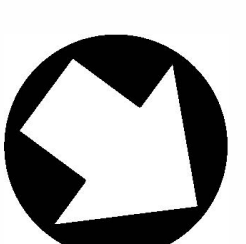


CONSTRUCTION:
823 - 829 S. LOS ANGELES ST.

- SCOPE OF WORK:
- 1) CONSTRUCT ONE LANDSCAPE MID-BLOCK BUMP OUT
 - 2) CONSTRUCT ONE CURB RAMP
 - 3) CONSTRUCT NEW CURB AND GUTTER
- UTILITIES WORK :
- 1) RELOCATE ONE FIRE HYDRANT (BY LADWP)
 - 2) RELOCATE ONE WATER METER (BY LADWP)
 - 3) RELOCATE ONE BSL PULL BOX (BY BSL)
 - 4) ADJUST ONE DOT PULL BOX TO GRADE

2-WEEK CONSTRUCTION SCHEDULE

N.T.S.



SCALE: 1/4" = 1' TO SCALE

CITY OF LOS ANGELES SHEET NO. 2-WK OF SHEETS		DEPARTMENT OF PUBLIC WORKS PRINCIPAL CIVIL ENGINEER: NAZARIO SAUCEDA DIRECTOR: _____ DATE: _____ HUGH S. LEE, S.E., C.C.S.			BUREAU OF STREET SERVICES REVISION DESCRIPTION: _____ DATE: _____ BY: _____ WORK ACCEPTED: _____ SERIAL NO.: _____ INDEX NO.: _____			
VERTICAL CONTROL : [CONTROL] HORIZONTAL CONTROL : [CONTROL]		SHEET TITLE : 2-WEEK LOOK AHEAD - 7/17 TO 7/28		PROJECT : FASHION DISTRICT PHASE II STREETScape PROJECT		CITY OF LOS ANGELES		
ADDRESS: S. LOS ANGELES ST BETWEEN OLYMPIC BLVD AND 7TH ST.		WORK ORDER NO. M0014217		DRAWING NO.		SCALE: 1/4" = 1' TO SCALE		